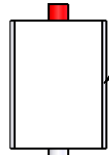


ULTRAVIOLET DISINFECTOR WITH 100% BACKUP CAPABILTY

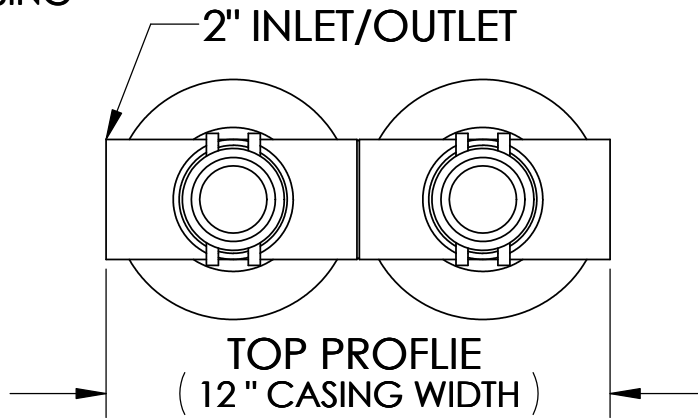
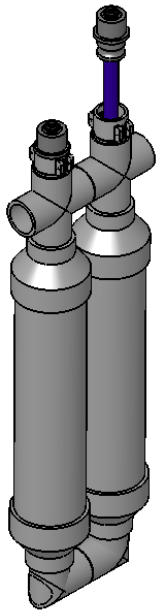


CONTROL PANEL

OPERATION: 100% BACKUP LAMP POWERS UP WHEN NO POWER IS DETECTED IN PRIMARY LAMP (RELAY SWITCHED)
 DIMENSIONS: 12.5"W X 17.5"H X 8"D
 120 VOLT
 INCLUDES DUAL LAMP WIRING HARNESS
 MASTER POWER DISCONNECT BY OTHERS

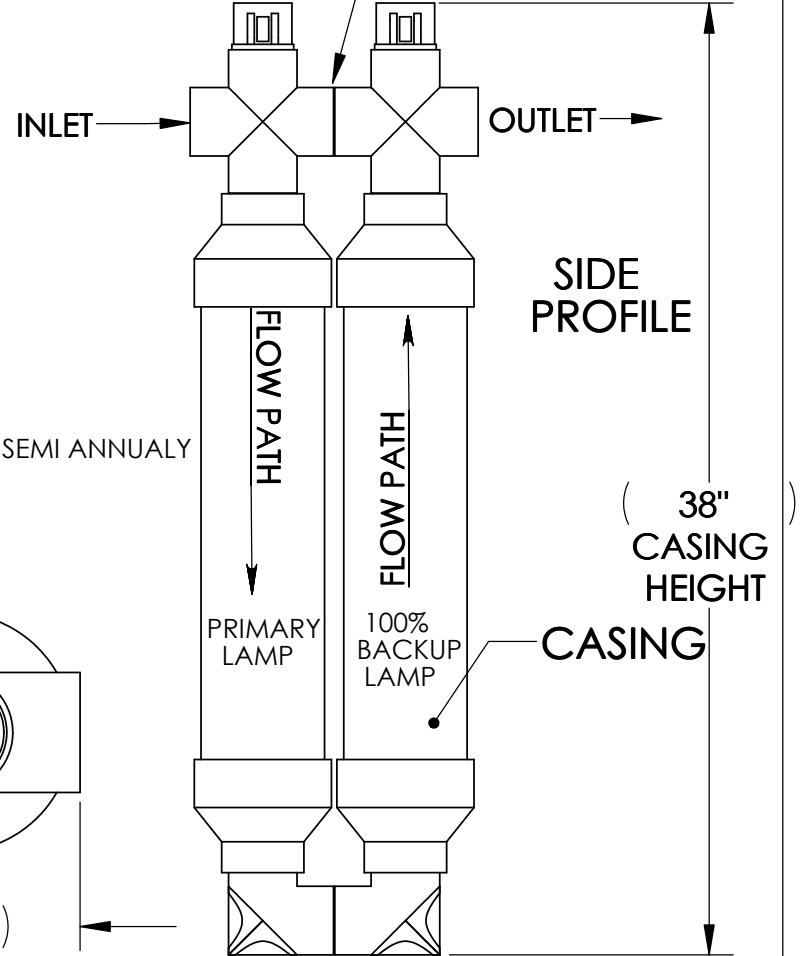
- PANEL SHALL BE MOUNTED WITHIN 6' OF UV CASING
- CASING SHALL BE FILLED WITH WATER PROIR TO POWERING UP LAMPS
- BULB LIFE EXPECTANCY (10,000 HOURS = 1 YEAR)
- DO NOT LOOK AT LAMPS WHILE POWERED UP
- O&M MAINTENANCE: DISCONNECT POWER & REMOVE AND WIPE LAMPS SEMI ANNUALY

1.5" CONDUIT TO CASING



WIRING HARNESS ATTACHMENT TO LAMPS

FLOW DIVERSION PLATE



INFLUENT PARAMETERS:		UNLESS OTHERWISE SPECIFIED:	NAME	DATE	E-Z UV 1000		
< 30 BOD ₅		DIMENSIONS ARE IN INCHES	DRAWN		TITLE: TECHNICAL DATA SHEET/ SHOP DRAWING		
< 30 TSS		TOLERANCES:	CHECKED				
< 30 TURBIDITY		FRACTIONAL ±	ENG APPR.		E-Z SET COMPANY HAYMARKET VA 703-753-4770		
< 10 GPM		ANGULAR: MACH ± BEND ±	MFG APPR.				
		TWO PLACE DECIMAL ±	Q.A.		SIZE	DWG. BY:	REV
		THREE PLACE DECIMAL ±	COMMENTS:		A	RICHMOND PERRY	05-01
		INTERPRET GEOMETRIC TOLERANCING PER:			SCALE: 1:12	WEIGHT: 20 LBS	SHEET 1 OF 1
		MATERIAL					
PATENT PEND. COPYRIGHT 2005 E-Z SET TANK COMPANY		FINISH					
		DO NOT SCALE DRAWING					

PROPRIETARY AND CONFIDENTIAL
 THE INFORMATION CONTAINED IN THIS DRAWING IS THE SOLE PROPERTY OF E-Z SET TANK COMPANY. ANY REPRODUCTION IN PART OR AS A WHOLE WITHOUT THE WRITTEN PERMISSION OF E-Z SET TANK COMPANY IS PROHIBITED.